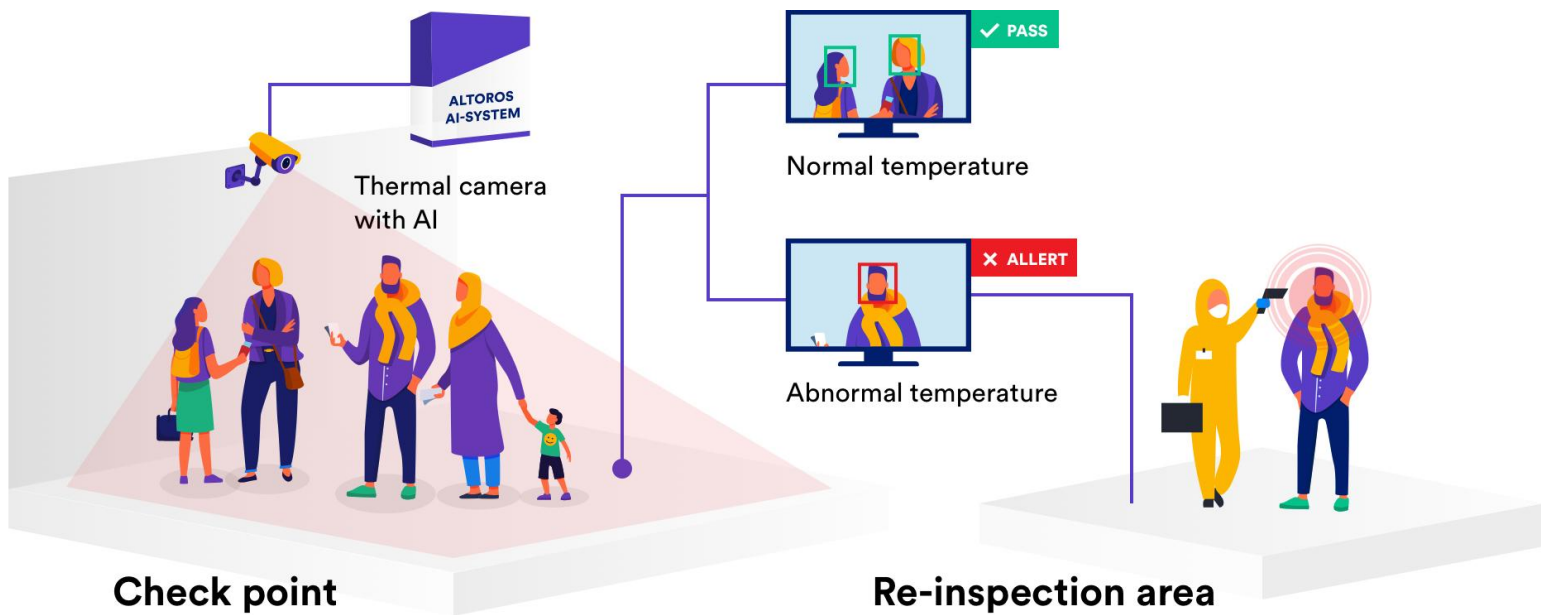




# AI-based temperature screening camera to Detect COVID-19

- ❖ Contactless temperature measurement
- ❖ Intelligent mobile/desktop alerts
- ❖ Detection accuracy up to  $\pm 0.3^{\circ}\text{C}/\pm 0.6^{\circ}\text{F}$
- ❖ Analysis of symptoms development
- ❖ Historical archive of cases
- ❖ Multitarget temperature measurement

AI-based temperature screening camera is a complex AI-based solution for crowded areas. The system detects the most common symptoms of COVID-19, among which is high body temperature. Temperature screening can also be used to further detect emerging respiratory viruses to prevent the mass spread.



## Application

Temperature screening is designed for multitarget temperature measurement with a high speed of results delivery. The solution also includes the alerting module to immediately inform if potentially infected individuals are detected. The most common application fields are shown below.

- 1 Subway
- 2 Airports
- 3 Manufactures
- 4 Commercial buildings
- 5 Campuses
- 6 Shopping centers

**1** The contactless system is easy to install and operate in the most visited and crowded places, such as entries, checkpoints, halls, etc.

Up to **30 persons** may be screened **simultaneously**.



**2** The solution employs artificial intelligence to recognize an individual's face and measure the body temperature, even if the face is covered with a mask, glasses, headwear, and other accessories.

The **accuracy is**  $\pm 0.3^{\circ}\text{C}/\pm 0.6^{\circ}\text{F}$



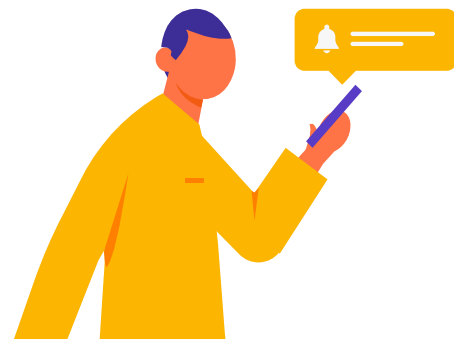
**3** Thermal cameras continuously monitor and measure body temperature, displaying the received data on the screen.

The speed of data displayed is **less than 1 sec**.



**4** Any anomalies will be automatically detected. Every responsible person immediately receives details for additional checks and further actions.

The alerting system **notifies the responsible** recipient **in a sec** after the anomaly is detected.



## 01 Artificial intelligence module

The module detects the right individual and finds an appropriate facial point to measure body temperature. As a result, the system saves time by analyzing only potentially infected individuals and increases the accuracy of the body temperature measurement (the permissible deviations of thermal cameras depends on the optical equipment used).

## 02 Equipment

The system can be integrated in thermal imaging systems. With audible alarm notifications, the system allows for efficiently tracking each case and proceeding with further actions.

## 03 Reporting system

Build daily or long-term reports on the recorded infection events, depending on the goal—establishing daily control over the situation, tracking the dynamics of events for data-driven decision-making, etc.

Buy the AI-based temperature screening camera to Detect COVID-19 to protect yourself from the COVID-19 virus spread.

Find the detailed information on the website [altoros.com/solutions/mass-fever-screener-with-ai](https://altoros.com/solutions/mass-fever-screener-with-ai)



Contactless temperature measurement



Intelligent mobile/desktop alerts



Detection accuracy up to  $\pm 0.3^\circ/\pm 0.6^\circ\text{F}$



Analysis of symptoms development



Historical archive of cases



Multitarget temperature measurement

## Contact us to discuss the next steps

[ekaterina.grishina@altoros.com](mailto:ekaterina.grishina@altoros.com)

Phone: (617) 841-2121 ext. 24



[altoros.com/solutions/mass-fever-screener-with-ai](https://altoros.com/solutions/mass-fever-screener-with-ai)